



Fundación Matan Baseter Panamá

**ABRE
PUERTAS**

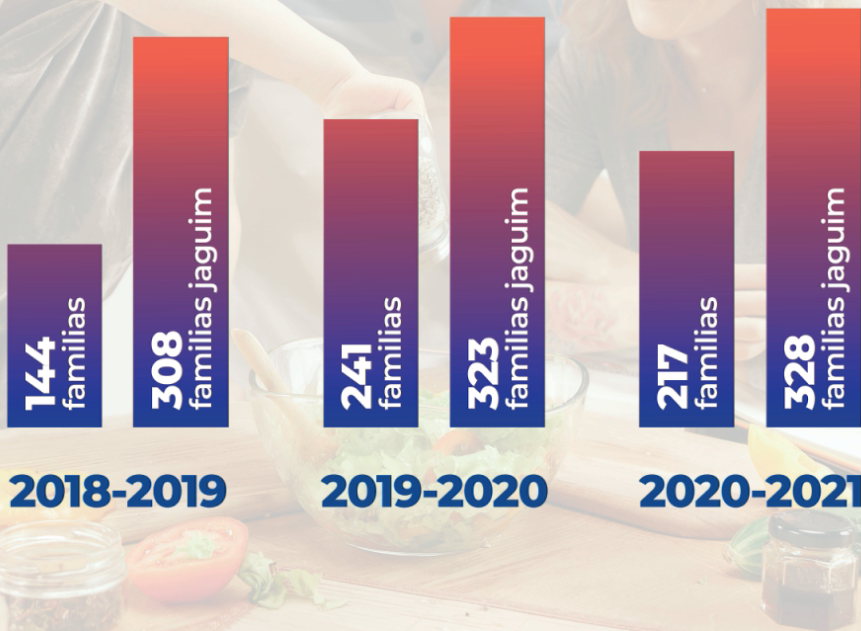
Gestión 2020-2021



Nutrición



Nutrición



Salud

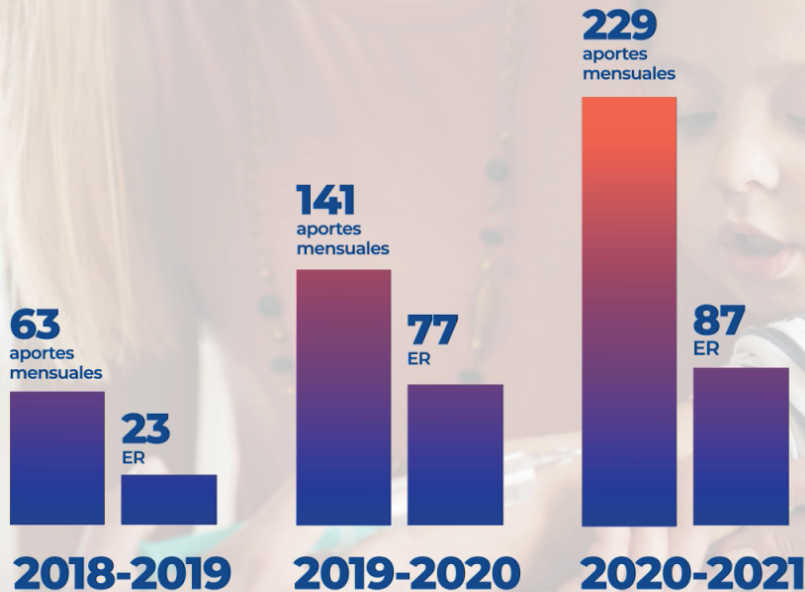


Salud

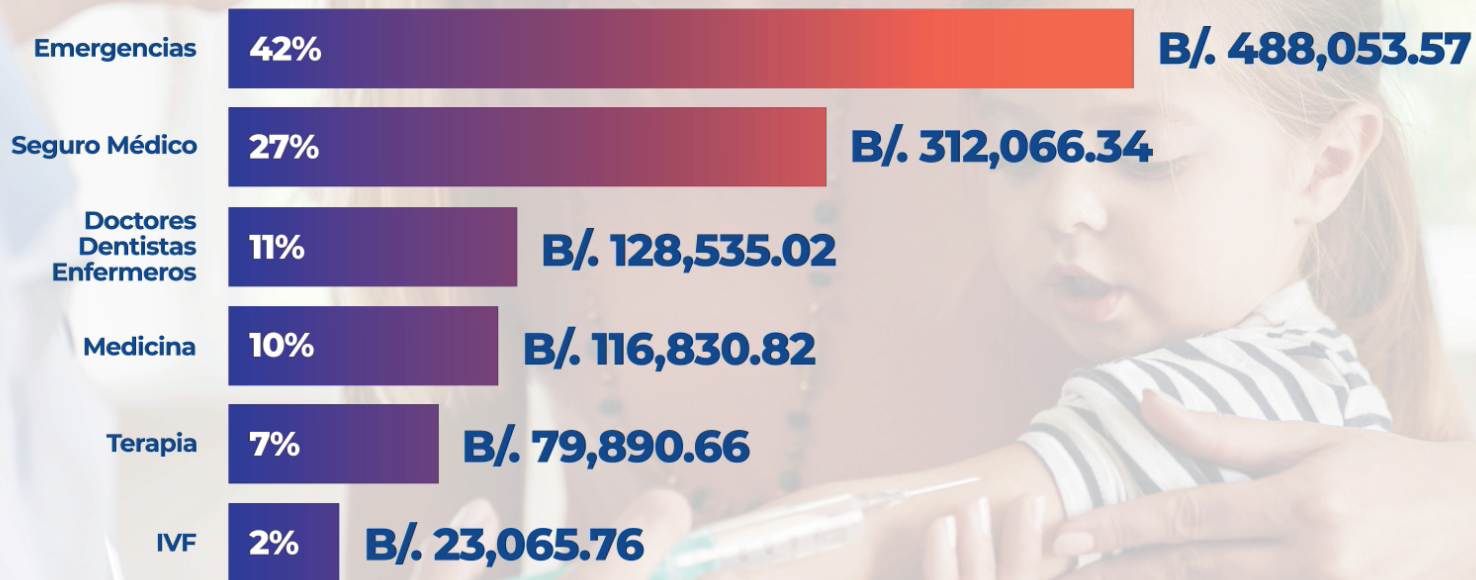
779
Aportes

1769
Aportes

2835
Aportes



Distribución de Salud



Gastos Básicos



Gastos Básicos



2018-2019

2144 aportes

B/. 53,875.25
promedio mensual

2019-2020

788 aportes

B/. 27,189.92
promedio mensual

2020-2021

535 aportes

B/. 22,354.70
promedio mensual

Educación



Educación

281

Alumnos

2018-2019

38

Alumnos

2019-2020

6

Alumnos

2020-2021

The background of the image shows a blurred classroom scene with several students sitting at desks. A prominent purple color overlay covers the entire image. In the foreground, a student with long hair is smiling while looking at a laptop. Other students are visible in the background, some looking at their laptops and others talking.

UP University Program



UP University Program

7

Alumnos

2018-2019

8

Alumnos

2019-2020

9

Alumnos

2020-2021

Ciclo de Vida



Ciclo de Vida



30

Eventos

B/. 9,500

Costo promedio
por evento

2018-2019

10

Eventos

B/. 3,800

Costo promedio
por evento

2019-2020

13

Eventos

B/. 2,785

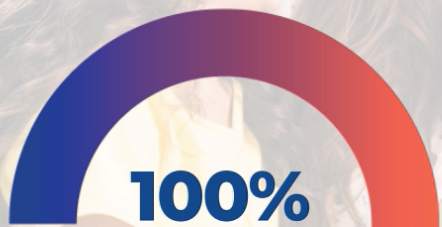
Costo promedio
por evento

2020-2021

Ingresos y Egresos



**Total Ingresos
Matan Baseter
2015-2021**



B/. 15,186,000

**Total Egresos
Matan Baseter
2015-2021**

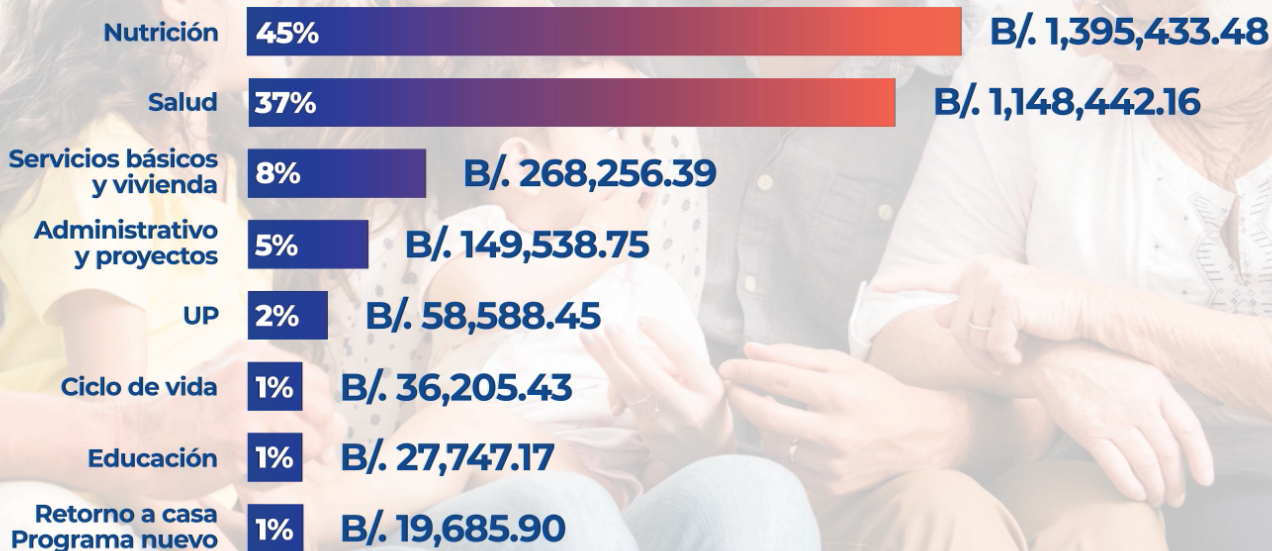


B/. 13,959,000

Distribución de Ayuda 2021

A photograph of a diverse family of five people and a dog sitting together on a couch. From left to right: a young boy in a striped shirt, a young girl in a pink shirt, a young girl in a light blue shirt, a man in a plaid shirt, and an older man in a plaid shirt. A dog is sitting between the young girl in the light blue shirt and the man in the plaid shirt. The entire image is overlaid with a blue gradient.

Distribución Ayuda 2021



Distribución Ayuda 2021

Total



B/. 3,103,897.73

Gestión 2020-2021



מתן בסתר
matan
baseter
panama

Fundación Matan Baseter Panamá